

**CELEBRATING
WORLD SOCIAL WORK DAY**

**UBUNTU AND FIELD
EDUCATION**

March 16th, 2021

10:00 AM - 12:00 PM (MST)

Strengthening Social Solidarity and Global Connectedness

Join us for a keynote lecture, panel discussion, and breakout discussions to celebrate World Social Work Day in the spirit of Ubuntu!

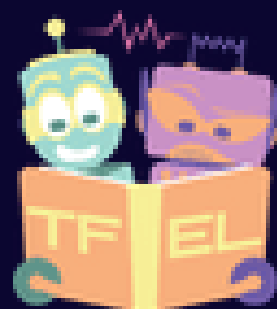
KEYNOTE SPEAKER

- Regine Uwibereyeho King, Associate Professor, Faculty of Social Work, University of Calgary

PANELISTS:

- Adugna Abebe, University of Gondar
- Clement Dlamini, University of Eswatini
- Wassie Kebede, University of Addis Ababa
- Augusta Olaore, Azusa Pacific University & Babcock University

**A symposium on
revisoning, rethinking,
and reimaging
social work education
in the spirit of Ubuntu**



**Transforming the Field
Education Landscape**

[CLICK HERE TO REGISTER](#)

TFEL is supported in part by funding from the Social Sciences and Humanities Research Council of Canada.



Social Sciences and Humanities
Research Council of Canada

Conseil de recherches en
sciences humaines du Canada

Canada



Transforming the Field
Education Landscape

UBUNTU AND FIELD EDUCATION

PROGRAM

10:00AM Welcome & Introduction

A brief introduction to Ubuntu, program, and territorial acknowledgements by Dr. Ellen Perrault, Dean in the Faculty of Social Work

10:15 AM Keynote Speaker

A presentation by TFEL Collaborator Dr. Regine King on *Ubuntu and Neoliberalism: A Match or Divorce for Social Work?*

10:45AM Panel Discussion

A panel discussion on how Ubuntu is understood in diverse contexts with the following TFEL partners:

- Adujna Abebe, University of Gondar
- Clement Dlamini, University of Eswatini
- Wassie Kebede, University of Addis Ababa
- Augusta Olaore, Azusa Pacific University & Babcock University

11:15 AM Break

A 10 minute break from 11:15AM -11:25 AM.

11:25 AM Breakout Sessions

An interactive brainstorming session using breakout rooms and Google Jamboard.

11:55 AM Closing Session

An opportunity to reflect on insights, recommendations, and future implications.

TFEL is supported in part by funding from the Social Sciences and Humanities Research Council of Canada.



Social Sciences and Humanities
Research Council of Canada

Conseil de recherches en
sciences humaines du Canada

Canada